

THE PUBLIC'S HEALTH AND SHALE GAS DEVELOPMENT

A NEWSLETTER FOR HEALTH CARE PROVIDERS AND PUBLIC HEALTH WORKERS

Issue 6: EHP Health Care Provider Forum, New Study on Shale Gas Waste

2nd Quarter | April 2019

FROM WELLHEAD TO ETHANE CRACKER: SHALE GAS, PETROCHEMICALS, AND HEALTH

SATURDAY, MAY 25, 2019 9 AM – NOON

Free program for health care professionals
REGISTER [HERE](#) OR CALL 724-260-5504 TO RSVP

Registration in advance preferred, walk-ins welcome.
Breakfast is included.

Community College of Beaver County
Learning Resources Center (LRC) Room 9103
1 Campus Drive, Monaca, PA 15061

Anne C. Epstein, MD, FACP

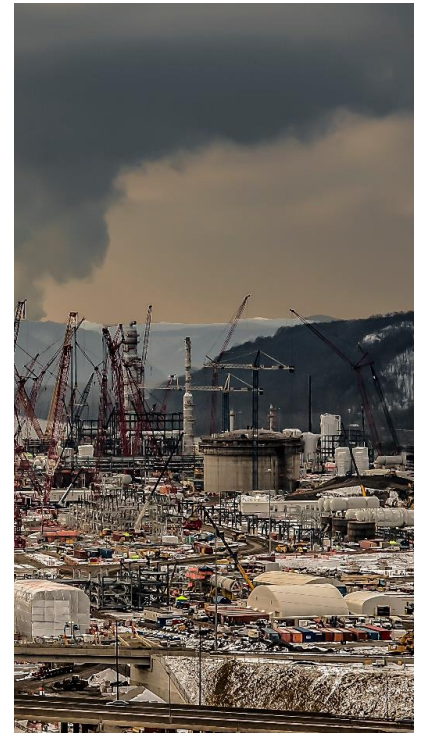
Board Certified in Internal Medicine and Sleep Medicine
Fellow of the American College of Physicians

Michael Abesamis, MD

Assistant Professor of Emergency Medicine
Director of Medical Toxicology Outpatient Clinic at UPMC

Ned Ketyer, MD, FAAP

Pediatric Alliance
Editor, The PediaBlog
AAP Council on Environmental Health
SWPA Environmental Health Project
Physicians for Social Responsibility PA
Climate Reality Leadership Corps



HEALTH IMPACTS OF OIL AND GAS DEVELOPMENT MEDICAL SYMPOSIUM

Colorado State University held a medical symposium on February 1st. Raina Rippel and Jessa Chabeau, EHP's Director and Case Manager, respectively, were invited to present on the ***Health Impacts and Health Care Provider Response to Shale Gas Development***.

The Symposium presented experts, data and scientific exploration for the medical, health and research communities. The presentations were recorded and you can watch them [here](#).

SHALE GAS WASTE

Shale gas development produces vast quantities of liquid, solid and semi-solid waste which is of concern to public health due to its toxicity and radioactivity.

PSE (Physicians, Scientists, and Engineers for Healthy Energy) has published a [comprehensive study](#) tracking 26 years of waste disposal related to shale gas development in PA.

Where is the waste deposited and how well is it tracked from cradle to grave? How close are waste disposal sites to your patients and how might it affect their health?

The study, press release and an interactive visualization tool can be accessed at [PSE Healthy Energy](#). The study was published April 2019.

PSR and ANHE

If you want to stay abreast of developments and news regarding environmental health and exposure, two health care organizations which may be of interest are:

[Physicians for Social Responsibility](#)

Works to protect human life from the gravest threats to health and survival.

[PSR Philadelphia/Pennsylvania](#)

Help grow the PA Chapter membership in western PA.

[Alliance of Nurses for Healthy Environments](#)

Promoting healthy people and healthy environments by educating and leading the nursing profession, advancing research, incorporating evidence-based practice, and influencing policy.

The Southwest Pennsylvania Environmental Health Project (EHP) is a nonprofit public health organization that assists and supports residents of Southwestern Pennsylvania and beyond who believe their health has been, or could be, impacted by unconventional oil and gas development (UOGD, or Fracking).

Services offered by EHP

- [Medical ToolKit – Screening & Assessment Tools – Reference Materials](#)
- [CME/CEU Credits](#)
- [National Shale Gas & Oil Health Registry](#)
- [Latest health studies related to UOGD](#)



2001 Waterdam Plaza Drive, Suite 201 | McMurray, PA 15317
724-260-5504 | info@environmentalhealthproject.org