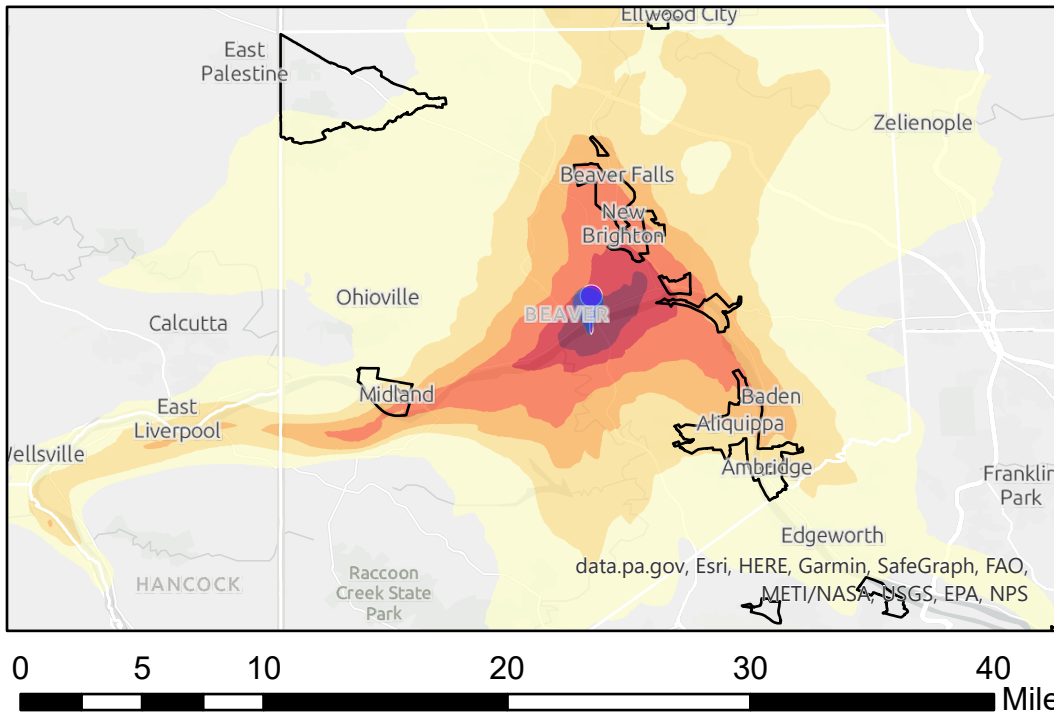
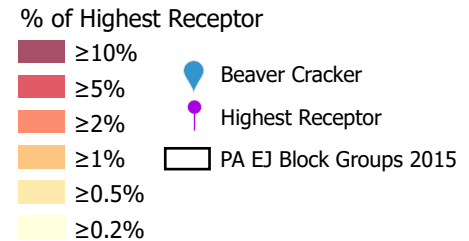


Modeled Relative Average and Maximum Airborne Primary Pollutant Levels from the Shell Ethane Cracker

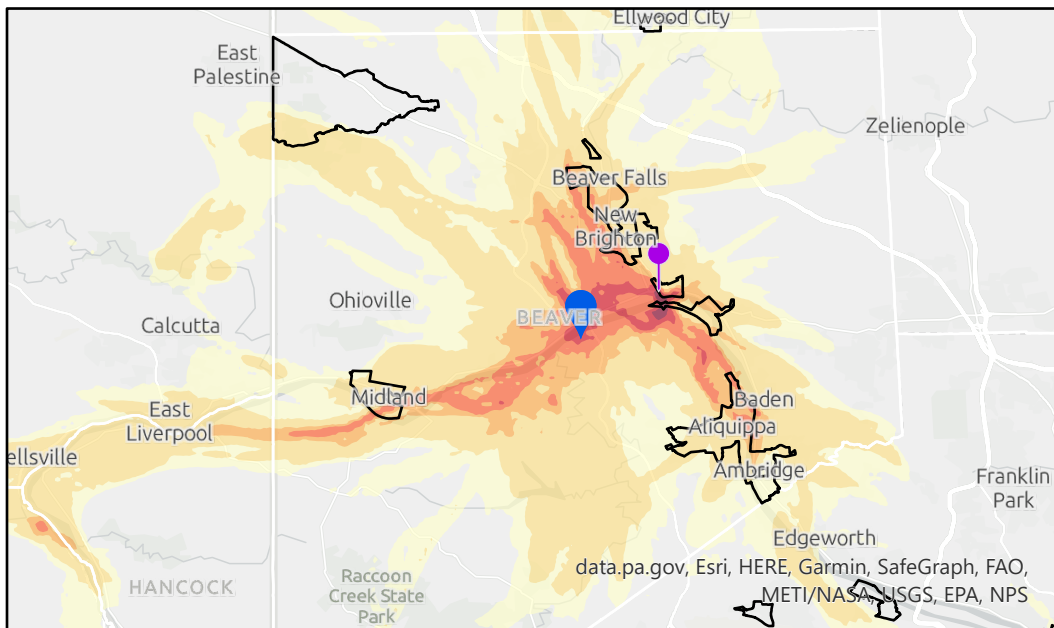


1-Year Average Concentration

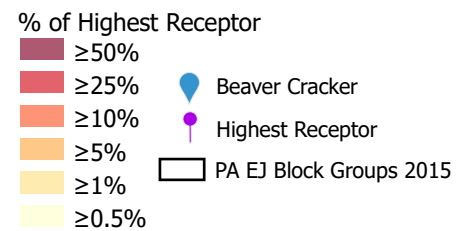


This map shows the modeled average concentration of primary air pollutants from the Shell Ethane Cracker in Beaver, PA.

The meteorological data used covered 5/1/2019-5/1/2020.



2-Year Maximum Concentration



This map shows the modeled maximum hourly concentration of primary air pollutants from the Shell Ethane Cracker in Beaver, PA.

The meteorological data used covered 3/1/2019-5/1/2021.

Modeling was conducted assuming constant emissions uniformly distributed across 25-50m above ground level at 40.670, -80.336.

This map provides an understanding of the geographical distribution of primary pollutants on a relative scale. It does not provide specific levels of pollutants expected at any location. Secondary pollution formation has not been modeled. Environmental Justice (EJ) block groups are defined using the PA DEP's definition: having a poverty rate of 20% or greater or a non-white population of 30% or greater.