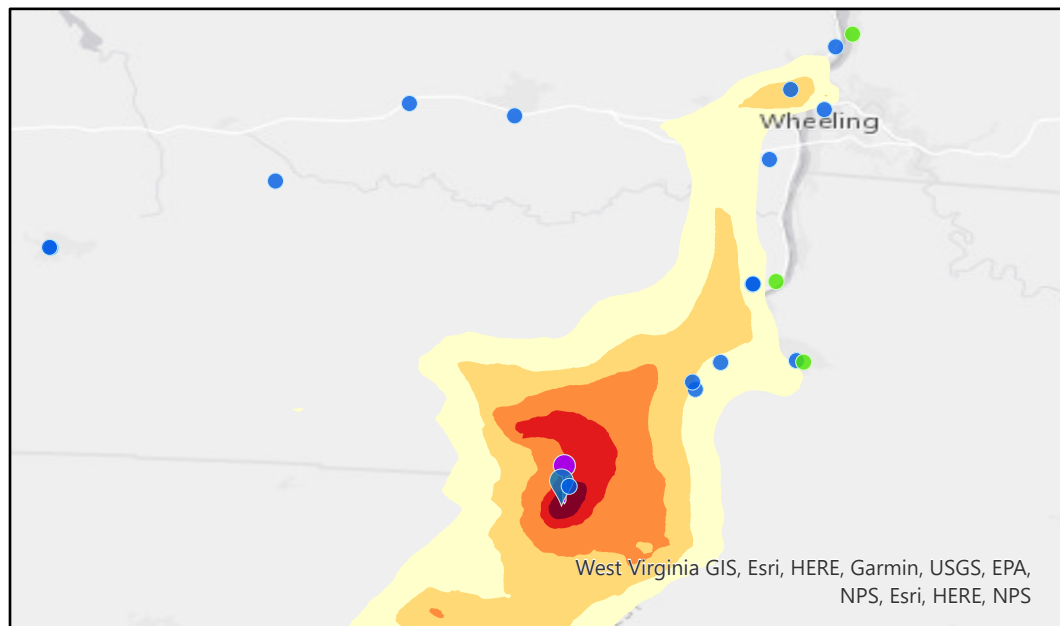


Modeled Relative Average and Maximum Airborne Pollutant Levels from the Dominion Site Outside Powhatan Point, OH



2-Year Average Concentration

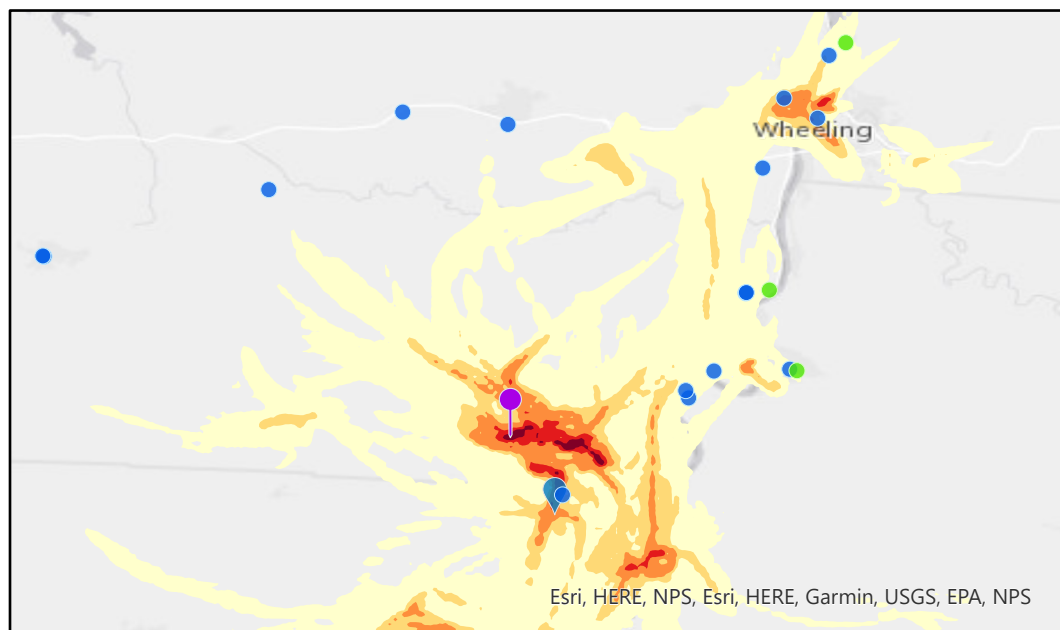
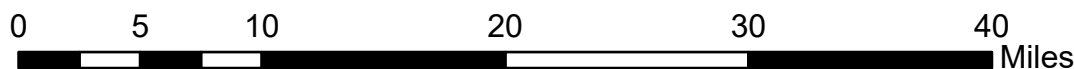
% of Highest Receptor

- ≥ 0.5%
- ≥ 1%
- ≥ 2%
- ≥ 5%
- ≥ 10%
- Dominion Transmission Inc
- Highest Receptor
- EPA Monitors
- Community Monitors

This map shows the modeled average concentration of primary air pollutants from the Dominion Transmission site outside Powhatan Point, OH.

The meteorological data used covered 3/1/2019-5/1/2021.

West Virginia GIS, Esri, HERE, Garmin, USGS, EPA, NPS, Esri, HERE, NPS



2-Year Maximum Concentration

% of Highest Receptor

- ≥ 1%
- ≥ 5%
- ≥ 10%
- ≥ 25%
- ≥ 50%
- Dominion Transmission Inc
- Highest Receptor
- EPA Monitors
- Community Monitors

This map shows the modeled maximum hourly concentration of primary air pollutants from the Dominion Transmission site outside Powhatan Point, OH.

The meteorological data used covered 3/1/2019-5/1/2021.

Esri, HERE, NPS, Esri, HERE, Garmin, USGS, EPA, NPS

Modeling was conducted assuming constant emissions uniformly distributed across 25-50m above ground level at 39.834307, -80.873920.

This map provides an understanding of the geographical distribution of primary pollutants on a relative scale. It does not provide specific levels of pollutants expected at any location. Secondary pollution formation has not been modeled.

