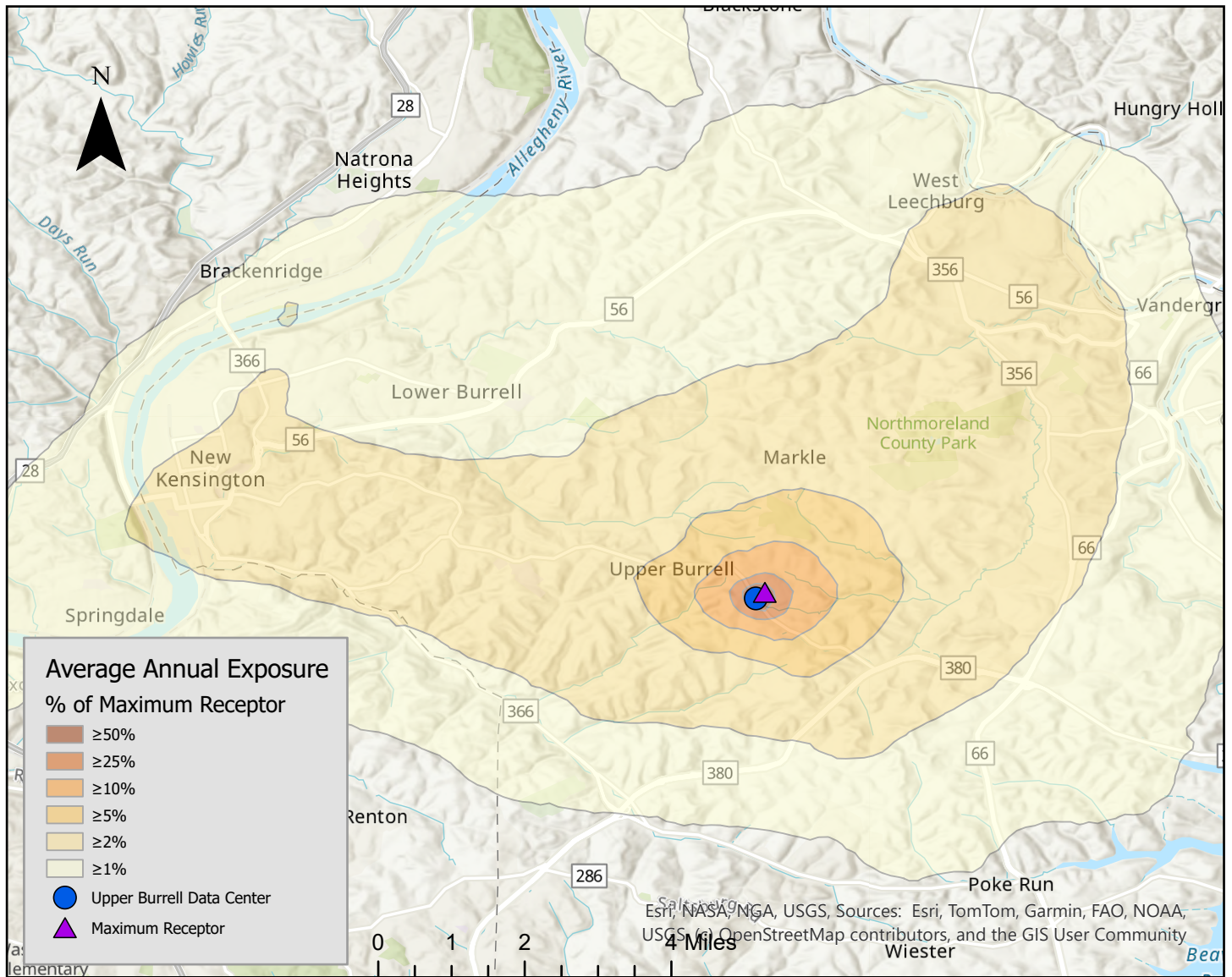


Pollution Dispersion from Upper Burrell Data Center



This map shows the modeled relative average annual concentration of primary air pollutants from the proposed Upper Burrell Data Center in Westmoreland County, PA. The meteorological data used covered 5/1/2024 - 5/1/2025.

Modeling was conducted assuming constant emissions uniformly distributed across 30-60m above ground level at 40.544696, -79.651285.

This map provides an understanding of the geographical distribution of primary pollutants on a relative scale. It does not provide specific levels of pollutants expected at any location. Secondary pollution formation has not been modeled.