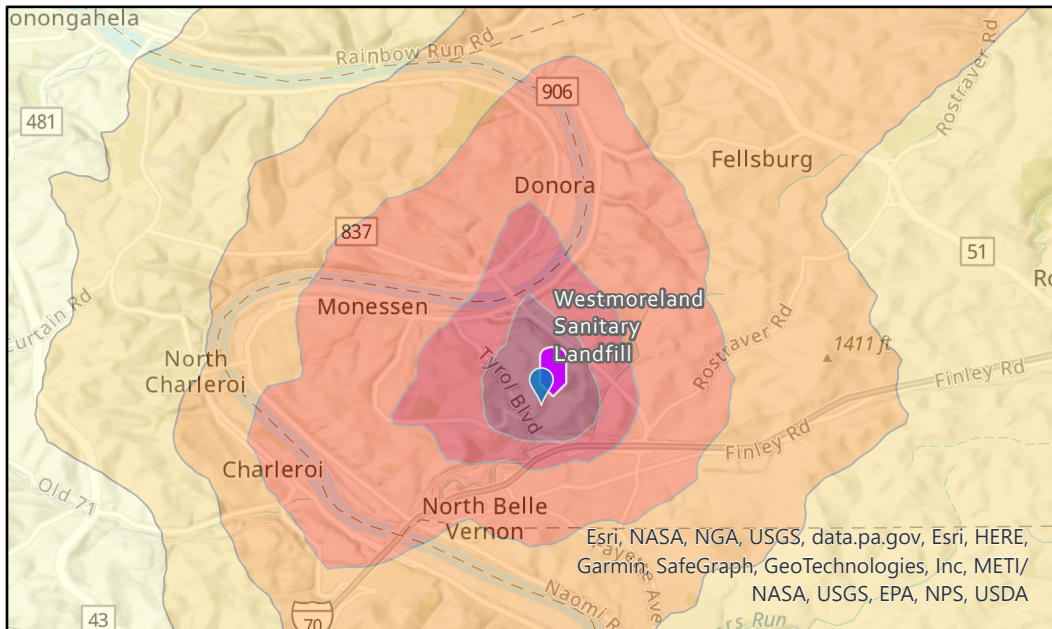


Modeled Relative Average and Maximum Airborne Primary Pollutant Levels from the Westmoreland Sanitary Landfill



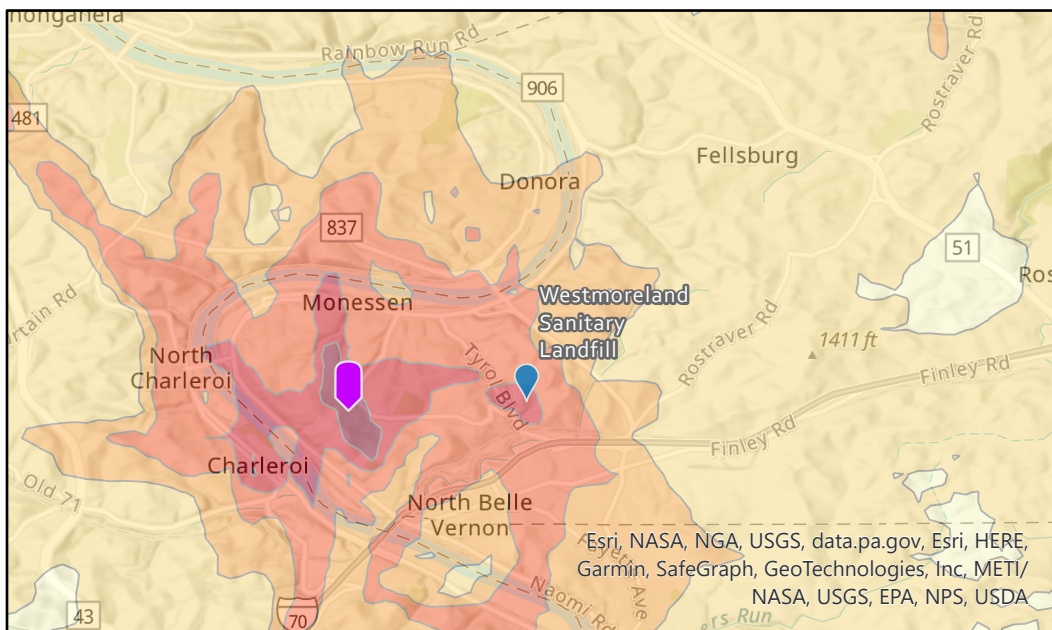
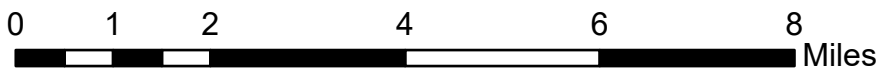
1-Year Average Concentration

% of Highest Receptor

- ≥10%
 - ≥5%
 - ≥2%
 - ≥1%
 - ≥0.5%
 - ≥0.2%
- Westmoreland Sanitary Landfill
- Highest Receptor

This map shows the modeled average concentration of primary air pollutants from the Westmoreland Sanitary Landfill.

The meteorological data used covered 2/2/2020-2/1/2021.



1-Year Maximum Hourly Concentration

% of Highest Receptor

- ≥50%
 - ≥25%
 - ≥10%
 - ≥5%
 - ≥1%
 - ≥0.5%
- Westmoreland Sanitary Landfill
- Highest Receptor

This map shows the modeled maximum hourly concentration of primary air pollutants from the Westmoreland Sanitary Landfill.

The meteorological data used covered 2/2/2020-2/1/2021.

Modeling was conducted assuming constant emissions uniformly distributed across 10-30m above ground level at 40.146, -79.857. Plotted relative concentrations are estimated at elevations between 0 and 100m above ground level.

This map provides an understanding of the geographical distribution of primary pollutants on a relative scale. It does not provide specific levels of pollutants expected at any location. Secondary pollution formation has not been modeled.