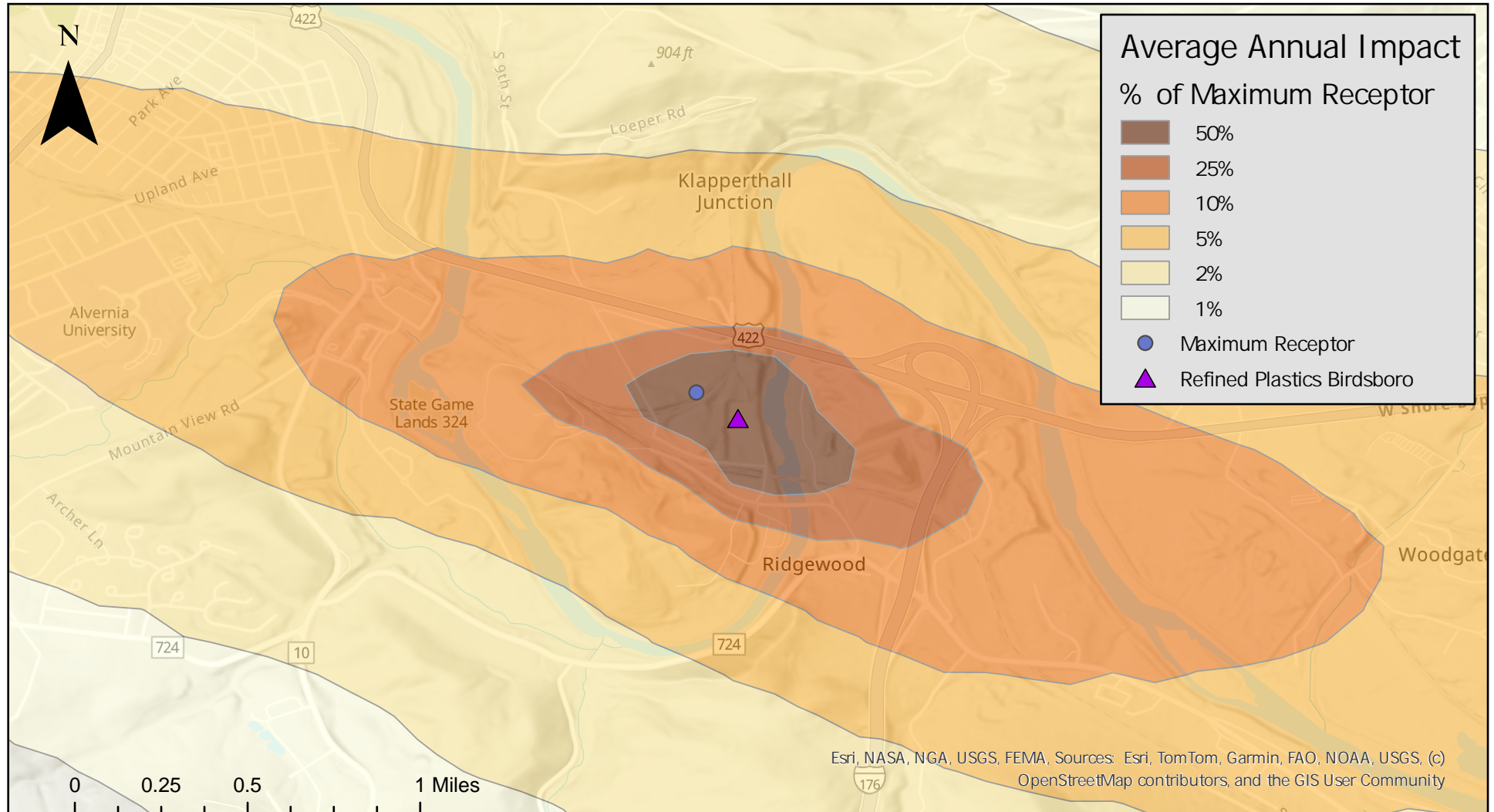


Pollution Dispersion from Refined Plastics Birdsboro



This image shows where emissions from Refined Plastics Birdsboro end up on average over a year. The amount of emissions at any location are relative to the location that receives the most emissions from the site, which is at the blue dot. The model does not show whether any particular location is safe or unsafe. Instead, it shows what locations could expect to see more emissions than others on average.

This model uses weather data from 5/1/2023 - 5/1/2024. Emissions were modeled coming constantly from 40.306N, 75.908W between 15m and 25m above ground level.