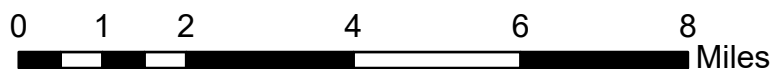
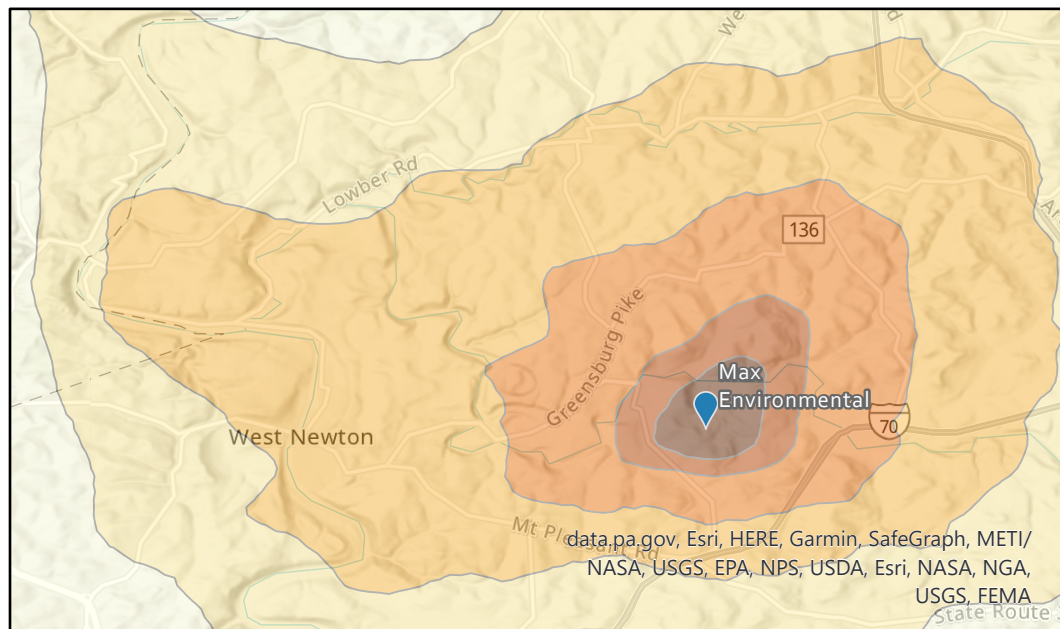
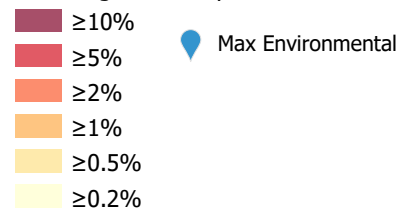


Modeled Relative Average and Maximum Airborne Primary Pollutant Levels from the Max Environmental Facility in Yukon, PA



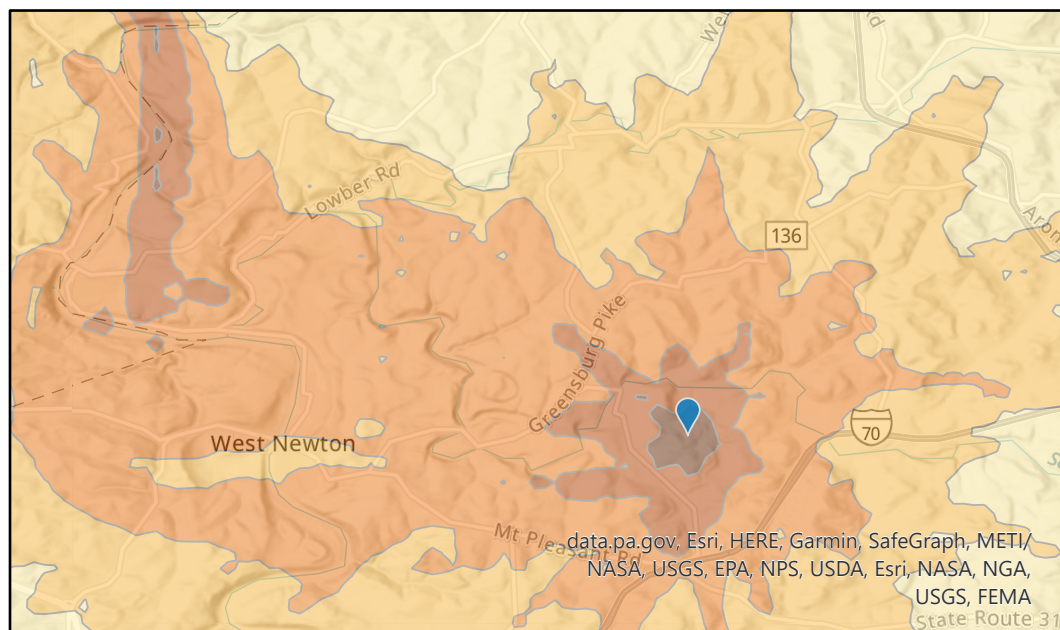
1-Year Average Concentration

% of Highest Receptor



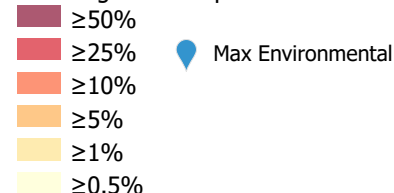
This map shows the modeled average concentration of primary air pollutants from the Max Environmental facility in Yukon, PA.

The meteorological data used covered 2/2/2020-2/1/2021.



1-Year Maximum Hourly Concentration

% of Highest Receptor



This map shows the modeled maximum hourly concentration of primary air pollutants from the Max Environmental facility in Yukon, PA.

The meteorological data used covered 2/2/2020-2/1/2021.

Modeling was conducted assuming constant emissions uniformly distributed across 10-30m above ground level at 40.211, -79.698.

This map provides an understanding of the geographical distribution of primary pollutants on a relative scale. It does not provide specific levels of pollutants expected at any location. Secondary pollution formation has not been modeled.